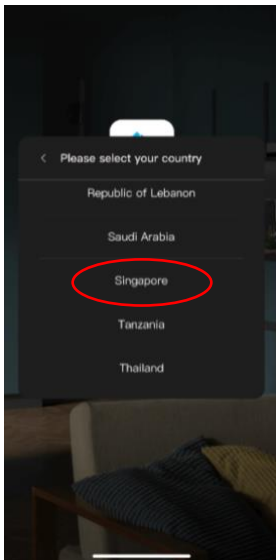


1. Get Haismart App from the Apple Store or Google Play.

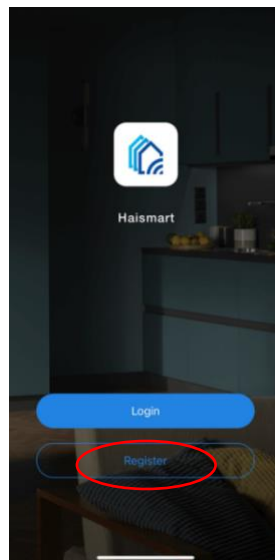


2. Choose "Singapore" from the country options.
3. If you're registering for the first time, click "Register" to enter your mobile phone number. If registering with your mobile phone number fails, you can use alternative methods such as email, Facebook, etc that is provided.
4. After receiving the verification code via SMS or email, input the code and submit.

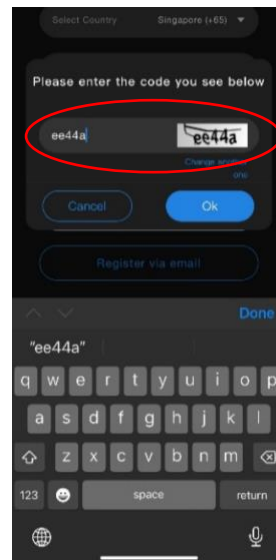
2.



3.



4.



Important Note:

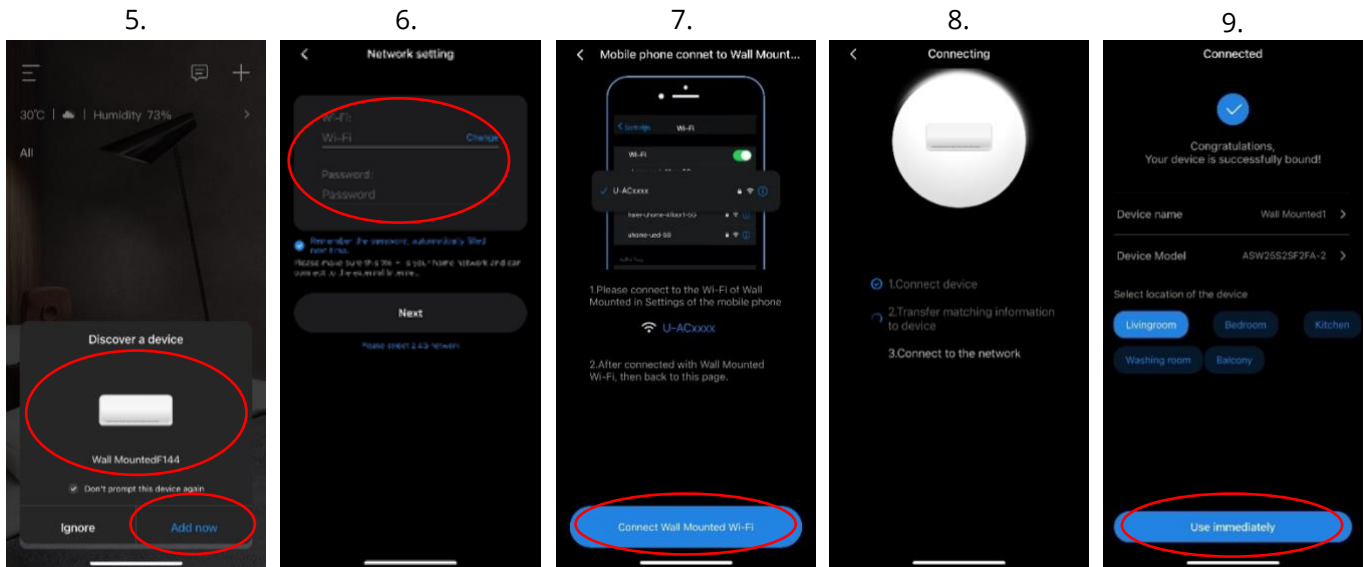
- Before connecting, please check that your desired indoor unit is switched ON and the Wi-Fi icon light on the indoor unit is blinking. If the indoor unit Wi-Fi icon light is not blinking, please refer to 18 to 20 for instructions to reset the Wi-Fi connection.
- A permanent Wi-Fi icon light indicate that the indoor unit is already connected.
- Ensure that the Bluetooth of your mobile phone is turn ON.

Method 1 – Auto Detection 1

Haismart App will auto detect Haier air conditioners within range.

5. If an indoor unit appears on the screen, select "Add Now".
6. The network setting page will appear. Go to your mobile phone setting page to select the network. Return to the Haismart page and it shall auto-fill your home network information. Key in your network password. Select "Remember the network" and "Next".
7. The indoor unit selection page will appear. Go to your mobile phone setting page to select the indoor unit, then back to Haismart page. (ID is U-ACxxxxx)
8. A screen indicating connection in progress will appear.

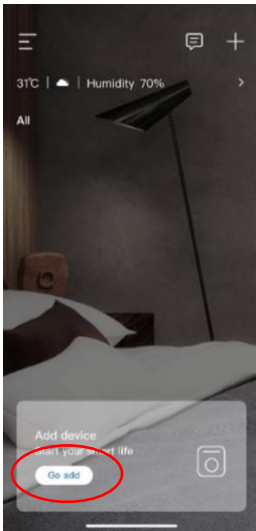
9. Once connection is successful, you can edit your air conditioner information and start using the smart control.
10. For subsequent indoor units, repeat steps 5 to 9.



Method 2 - Auto Detection 2

11. If the indoor unit does not appear automatically as in Method 1, tap on "Go Add" located at the bottom.
12. You'll see the indoor units listed at the bottom. Select one to proceed. Alternatively, you can turn OFF indoor units you're not currently connecting to avoid complications.
13. The network setting page will appear. Go to your mobile phone setting page to select the network. Return to the Haismart page and it shall auto-fill your home network information. Key in your network password. Click "Remember the network password" and "Next".
14. The indoor unit selection page will appear. Go to your mobile phone setting page to select the indoor unit, then back to Haismart page. (ID is U-ACxxxxx)
15. A screen indicating connection in progress will appear.
16. Once connection is successful, you can edit your air conditioner information and start using the smart control.
17. For subsequent indoor units, repeat steps 11 to 15

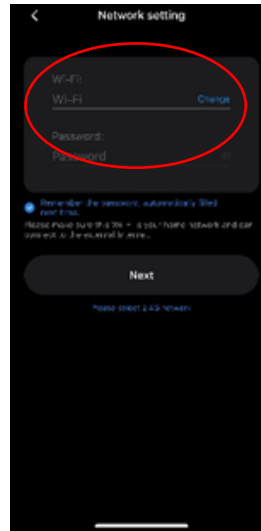
11.



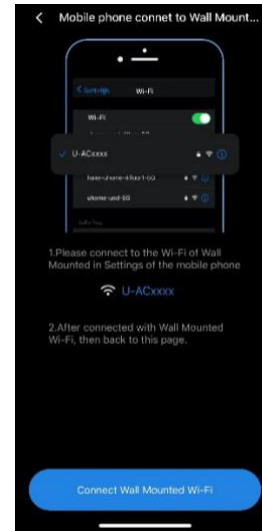
12.



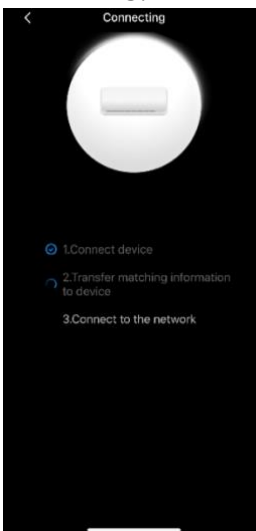
13.



14.



15.



16.



Method 3 - Manual Connection

If the desired indoor unit doesn't appear automatically in Method 1 or 2, you can manually add it. Before proceeding with manual connection, ensure the indoor unit is in connecting mode with the Wi-Fi icon light blinking by:

18. Turn off and wait a few second, then turn on the desired indoor unit.
19. Set the temperature to 30 degrees on the remote control, pointing towards the indoor unit, press and hold the power button for 5 seconds or more till a beep sound. The Wi-Fi icon light should start blinking.
20. If the above does not work, turn off the main power supply (Isolator/Power Socket), wait a few second and then switch it back on, then repeat 18 to 19.
21. Select on "Go Add" at the bottom of the screen.
22. Select "Add Device".
23. Choose the model of the desired indoor unit (other indoor units not being configured should be switched off prior to this to avoid complication).

24. Click "Next" if the indoor unit Wi-Fi icon light is already in connecting mode (with the Wi-Fi icon light blinking).
25. Click "The above operation has been completed" and "Next"
26. The network setting page will appear. Go to your mobile phone settings page to select the network. Return to the Haismart page and it shall auto-fill your home network. Key in your network password. Click "remember the network and password" and "Next".
27. The indoor unit selection page will appear. Go to your mobile phone settings page to select the indoor unit, then back to Haismart page.
28. A screen indicating the connection in progress will appear.
29. Once connection is successful, you can edit your aircon information and start using the smart control.
30. For subsequent indoor units, repeat steps 17 to 26

